

N.E. Eyre

Plain City

Nov. 27th 1894

Survey made for Sec. 20, T.6.N. R.1.W.

2640
495 ← 2145.7 ft →

Brick pier
1 ft. below
Surface

28-24 Christian

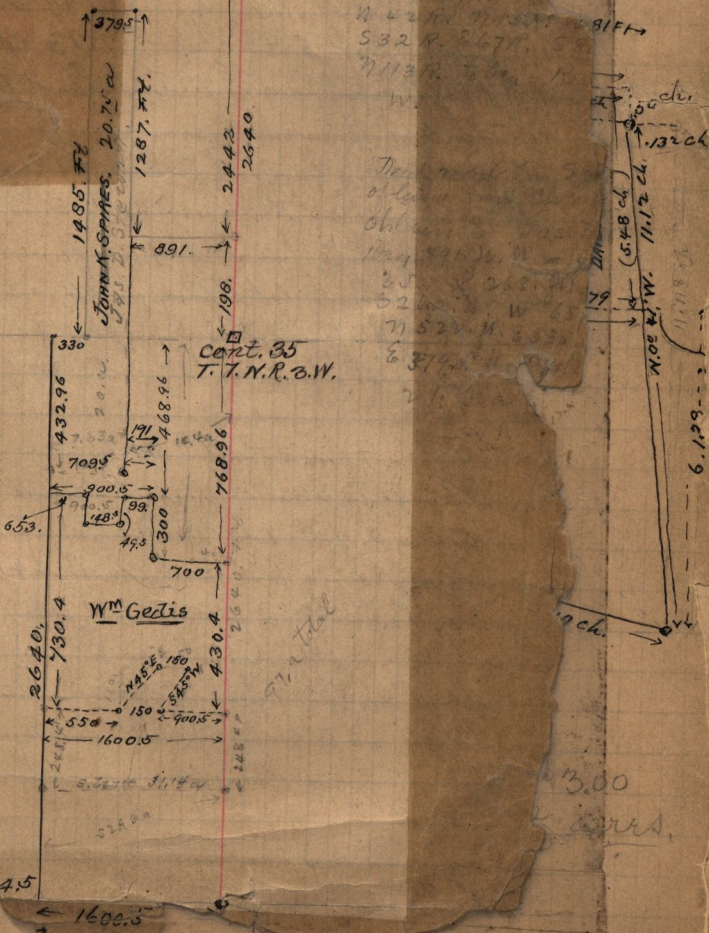
Prop. 47 R. 500 75
Sec. 35 T.7.N. R.1.W.
N 42 W. 1115 ft
S 32 R. 867 ft
N 113 R. 700 ft

JOHN A. SPIRES. 60. ac.

JOHN A. SPIRES. 20.75 ac

Cont. 35
T. T. N. R. 2. W.

Wm Geddis



S.W. Cor. S.W. 1/4 Sec. 20, T.6.N-R.1.W